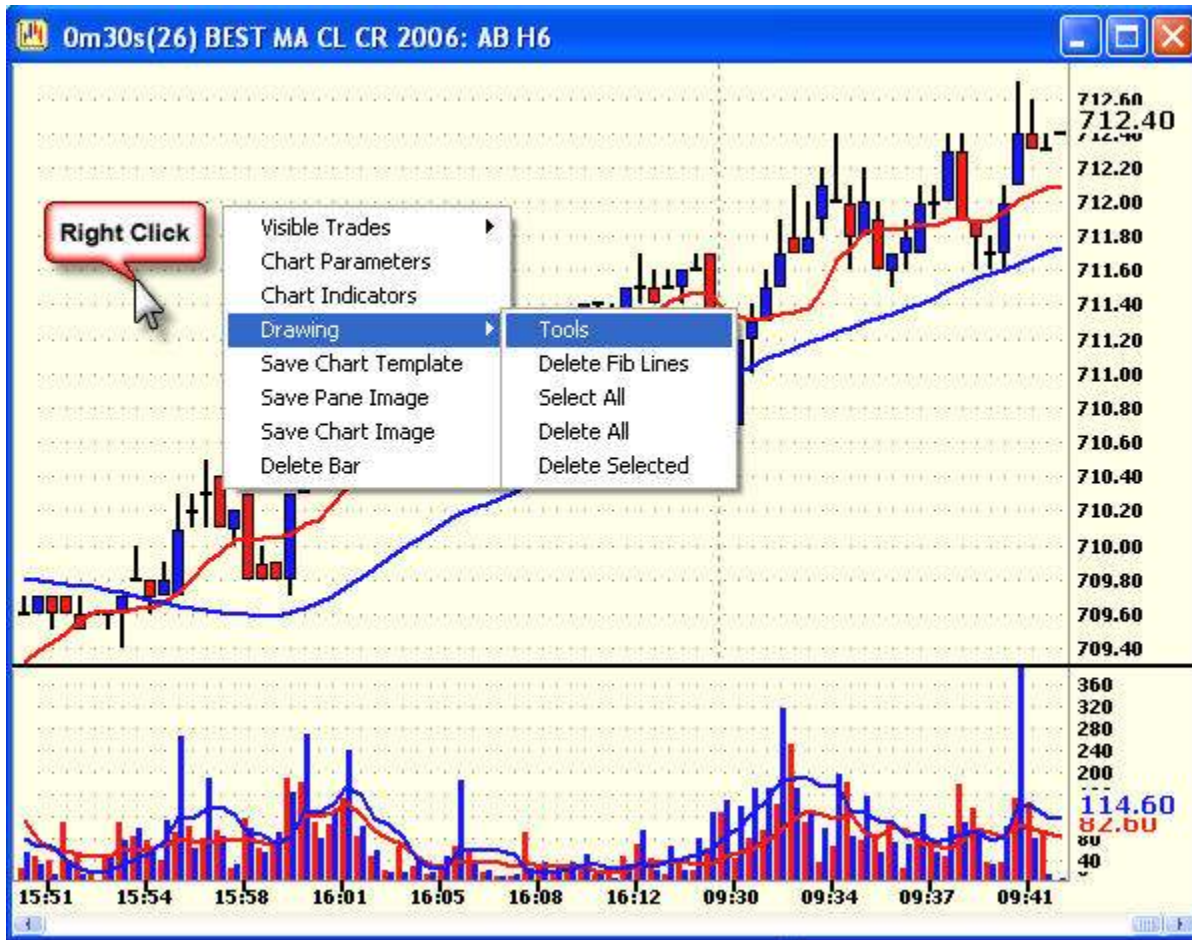


Drawing Tools

- Drawing Tools..... 1**
- Trend Line Tool.....4
- Horizontal Line Tool.....5
- Vertical Line Tool5
- Linear Regression Line Tool5
- Arrow Tool6
- Squiggly Line Tool.....6
- Box Tool6
- Circle Tool.....6
- Text Tool7
- Delete Tool.....7
- Selection Arrow7
- Fibonacci Retracement Tool.....8
- Fibonacci Projection Tool.....9
- Fib Magnet11
- Fib AutoCalc11

Right click any chart in "Chart Mode" to bring up the Drawing Tools.



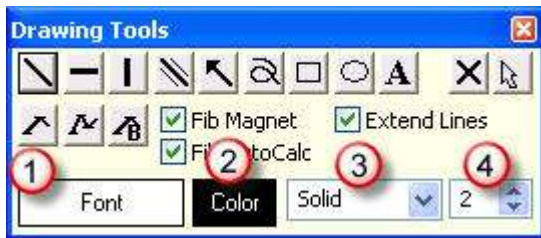
Note: You can delete drawings by right clicking on chart and selecting one of the options above.

Drawings are not saved on charts when you log off your Profile or Save Chart Template.

You can save a snapshot of your chart with drawing by right clicking on chart and choose "Save Chart Image".

Drawing Tools Window:

Select "Tools" and the Drawing Tools window will open:



Select the tool you want to use.

- 1) If you want to change the font when writing something click on the Font window and select your Font, Font style and size.
- 2) Select a color for the tool by clicking on the "Color" button. A color palette will open where you can select a color and click "OK".
- 3) Select a style for any line part of your drawing by clicking on the arrow next to style. The styles are: Solid, Dot, Dash, DashDot, DashDotDot.
- 4) Select the thickness for your drawing by clicking the up/down arrows and choose a number. The larger the number the thicker your drawing.

Note: The drawing tools will only draw where there are bars, volume or indicators. You cannot draw in an area where there are no bars.



Trend Line Tool

- This tool will allow you to draw a trend line.
- Click on the Trend line tool to select it.
- Click on the chart and dragging the mouse from one pivot High/Low to the next pivot High/Low to draw your trend line.
- Check "Extend Lines" to have the trend line extend forward beyond where you finish drawing the trend line.



Horizontal Line Tool

- This tool will allow you to draw a Horizontal line.
- Click on the Horizontal line tool to select it.
- Click on the chart and drag the mouse from one point to the next point to draw your horizontal line.
- Check "Extend Lines" to have the horizontal line extend forward beyond where you finish drawing the horizontal line.



Vertical Line Tool

- This tool will allow you to draw a Vertical line.
- Click on the Vertical line tool to select it.
- Click on the chart and drag the mouse from one point to the next point to draw your Vertical line.



Linear Regression Line Tool

- This tool will allow you to draw a Linear Regression line.
- Click on the Linear Regression line tool to select it.
- Click on the chart and drag the mouse from one point to the next point to draw your Linear Regression line.
- Check "Extend Lines" to have the Linear Regression line extend forward beyond where you finish drawing it.
- This will just draw the Linear Regression line. It will not draw the Regression channel around the line.



Arrow Tool

- This tool will allow you to draw an arrow.
- Click on the arrow tool to select it.
- Click on the chart and drag the mouse to draw your arrow.



Squiggly Line Tool

- This tool will allow you to draw any shape you want.
- Click on the squiggly line tool to select it.
- Click on the chart and drag the mouse to draw your shape (free style).



Box Tool

- This tool will allow you to draw any box type shape you want.
- Click on the box tool to select it.
- Click on the chart and drag the mouse to draw your shape (square or rectangle).



Circle Tool

- This tool will allow you to draw a circle any size you want.
- Click on the circle tool to select it.
- Click on the chart and drag the mouse to draw your shape (round or oblong shape).



Text Tool

- This tool will allow you to draw text.
- Click on the text tool to select it.
- Click on the chart and drag the mouse to draw your text box. A window will open where you can type your text. If you want a box around your text, check "Show Border".



Delete Tool

- This tool will allow you to delete any drawing.
- Click on the delete tool to select it.
- Click on the drawing to delete the drawing. You may have to click on several different parts of the drawing before it will delete.



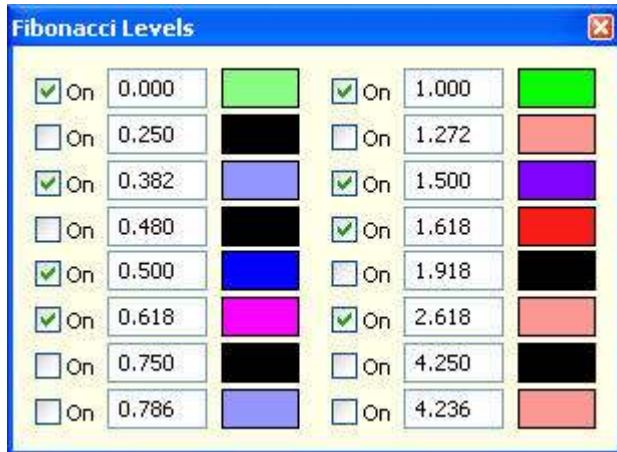
Selection Arrow

- This tool will move item drawn on the chart.
- Click on the Selection Arrow to select it.
- Click on the drawing to select the drawing. You can then move the drawing to a new area on the chart.



Fibonacci Retracement Tool

- This tool draws a Fibonacci Retracement on the chart.
- Click on the Fibonacci Retracement tool to select it.
- Right click on the Fibonacci Retracement tool to open the Fibonacci Levels window.



- You can define your Fibonacci Retracement levels and colors in this window. Check the box next to "On" to show that level.
- Left click on the chart on a swing high/low and hold the mouse while you move to the next swing low/high and then release.



Fibonacci Projection Tool

- This tool draws a Fibonacci Projection on the chart.
- Click on the Fibonacci Projection tool to select it.
- Right click on the Fibonacci Projection tool to open the Fibonacci Levels window.
- This will open the Fibonacci Projection Level window. This will look like the Fibonacci Retracement Levels window but when you change levels and colors it will save these levels with the Fibonacci Projection tool.
- To draw a Fibonacci Projection you need to select a swing low/high to swing high/low to swing low/high. This will project a Fibonacci

Level forward. This would give you a high/low beyond the first swing high/low.

- Left click on your first swing high/low and hold the mouse to draw to the next swing low/high.
- Release the mouse and immediately click on the next swing high/low to complete the Fibonacci Projection and see your Fibonacci Projection levels.

Note: *Fib AutoCalc must be unchecked for Fibonacci Projections levels to be drawn correctly.*



Fib Magnet

This will automatically select the exact high/low of the bar selected for the swing high/low when checked.

Fib AutoCalc

This will automatically recalculate the fib levels when the price moves outside the defined swing.

Note: *Fib AutoCalc must be unchecked for Fibonacci Projections levels to be drawn correctly.*

When using Fibonacci Retracements and Projections you may want to increase the Axis Offset in Chart Parameters.

This will create a wider space between the bars on the chart and the prices so the Fibonacci Retracements and Projections will not overlap bars on your chart.

