

## Trademaven Profiles vs. Layouts

Truly understanding the difference between Profiles and Layouts can be instrumental to become a fluent user of our program. It isn't extremely complicated but can be difficult to explain over the phone or through a training video.

Lets start with profiles:

Whenever you are looking at a market in Trademaven you are looking at a profile. A profile is just a fancy word for Market/Charts, but since such a word does not exist, we say PROFILE

**PROFILE = Data feed + Contract Name + Contract expiration**

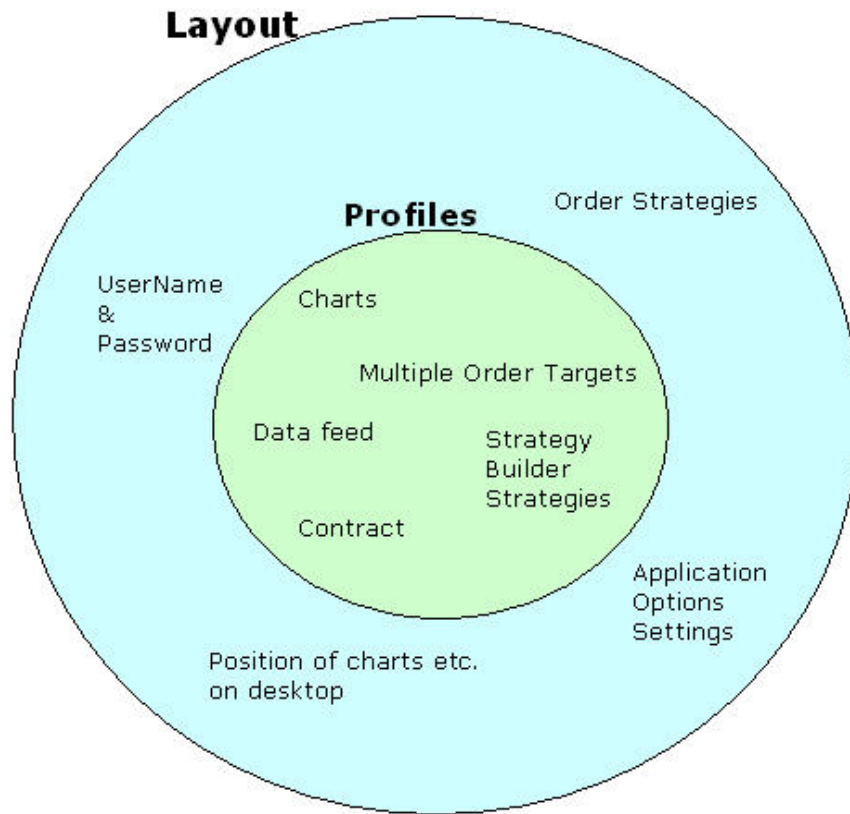
Above is what makes up a profile, but your profile also contains all your charts for any given market. On the diagrams on the following pages, you will see what a profile looks like on Trademaven.

### Profile Name

Just what it says, its only a name. You can trade the Russell off the profile name "Goofball" or "Knucklehead" or any other name you can think of. What matters is what you select for the following options below. Think of it like a file name for a word document, you can call the document "A Christmas Story" and then write about Halloween, the title is only a title.

### Data Feeds

When you decide you have had enough paper trading and are ready to attack the live market place, you will need to change to a live data feed. **PATS** and **PATS E-SIGNAL** are the live data feeds, and are only accessible to users who have opened an account with our firm. Price feeds **Esignal**, **Pats Simulation**, and **Trademaven Sim** are all simulated feeds. Your live accounts will only appear on **PATS** and **PATS E-SIGNAL**. All the charts you have created while logged onto "S&P Live" will open up where you left them.



## **Contracts**

What you are trading! There are two components of the contract, the contract name and the contract expiration. Also visible is the exchange on which the contract trades. In the “contract name” dropdown menu you will more than likely see a very long list of contracts, not all are available for trading however. You must contact us via email to setup trade limits for a contract before you will be eligible for a price feed on said contract.

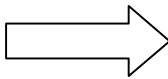
## **Layouts**

As you can see in the diagram above, Layouts are more comprehensive than profiles, and therefore save more of your information. When you save a layout, you save everything that can be possibly saved in Trademaven, from Chart settings to passwords to the placement of every window on your screen. Your layout is selected at the login screen.

For some great, detailed contract and market information visit:

Chicago Mercantile Exchange -  
Chicago Board of Trade-  
CME Group-

[www.cme.com](http://www.cme.com)  
[www.cbot.com](http://www.cbot.com)  
[www.cmegroup.com](http://www.cmegroup.com)



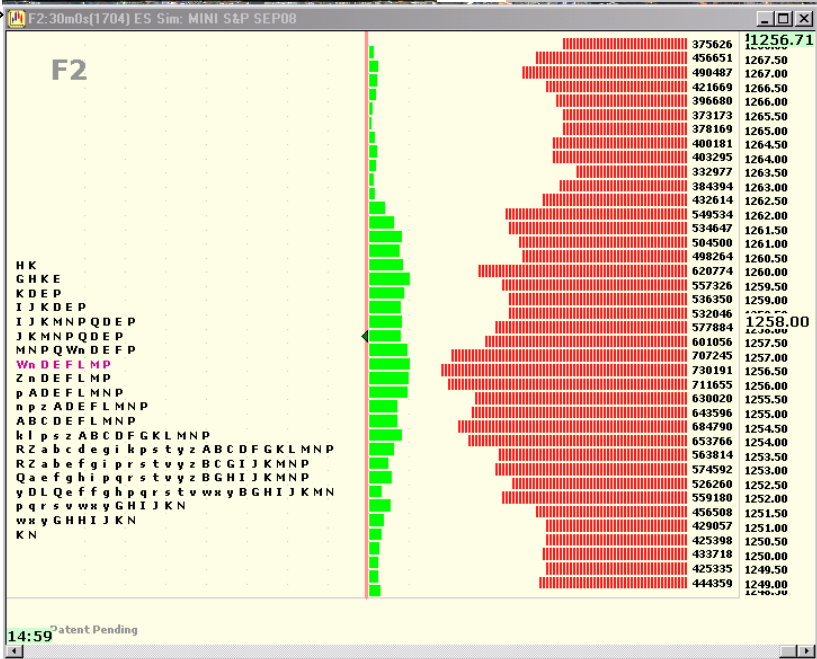
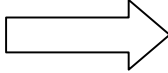
BUY Market		Position Flat	SELL Market			
BUY Bid		0.00	SELL Ask			
Cncl	Amend	Buy	21.50	Sell	Amend	Cncl
			1262.00			
			1261.75			
			1261.50			
			1261.25			
			1261.00			
			1260.75			
			1260.50			
			1260.25			
			1260.00			
			1259.75			
			1259.50			
			1259.25			
			1259.00	1260		
			1258.75	1623		
			1258.50	1220		
			1258.25	1272		
		(24)	1258.00	119		
		1210	1257.75			
		786	1257.50			
		998	1257.25			
		1532	1257.00			
		1225	1256.75			
			1256.50			
			1256.25			
			1256.00			
			1255.75			
			1255.50			
			1255.25			
			1255.00			
			1254.75			
			1254.50			

0.00 0 Focus P H  
 1 2 5 10  
 SimAccount8  
 Cancel ALL Reverse Flatten  
 Profit:  Loss:  OCO  MOC

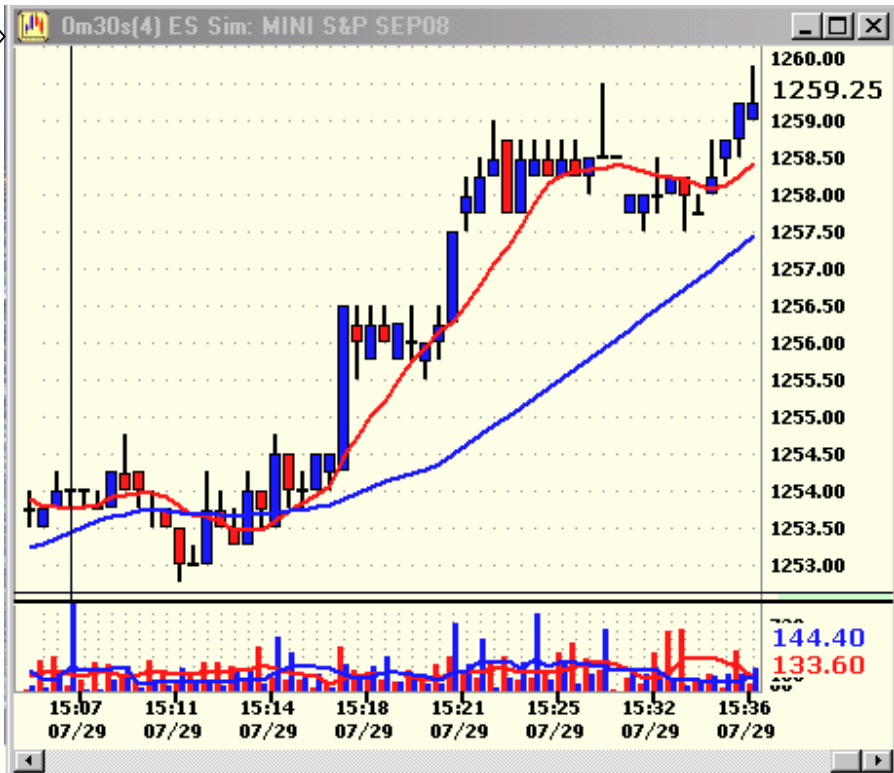
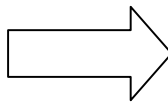
As you can see, each window has the same information in the upper-left hand corner. This means that each window shares the same Profile. ES Sim: MINI S&P SEP08

You will see that it appears on both charts and the dome.

If you were to close out the dome, all the charts sharing the profile would be terminated as well.



# ES Sim: MINI S&P SEP08



**Profile Logon**

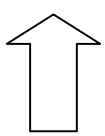
Select Profile  
ES Sim

Select Price/Host Feed  
PATS Simulation

Contract Name  
MINI S&P

Contract Expiration Exchange  
SEP08

Profile Logged ON



**Profile Logon**

Select Profile  
ES Sim

Select Price/Host Feed  
PATS Simulation

Contract Name

Contract Expiration Exchange

Same Profile  
Logged OFF

