

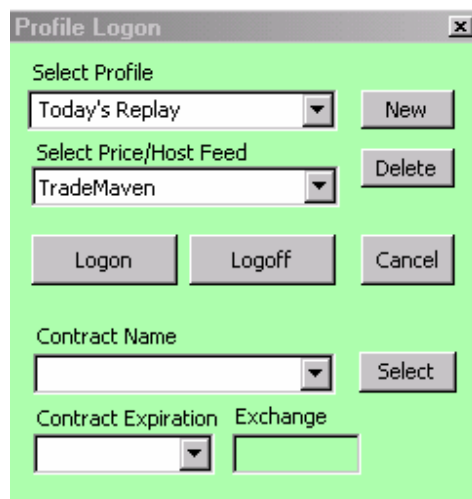
TradeMaven Replay Mode

TradeMaven allows users to replay markets that have traded already. This allows you to run past markets on TradeMaven charts and indicators.

To access Market Replay you will need to open a new Trade Window or new Trade Chart. You can do this by going to **Trading** and **New**. Once the window is open go to **Trading** and **Profiles**.

Under **Select Profiles** choose **Today's Replay**.

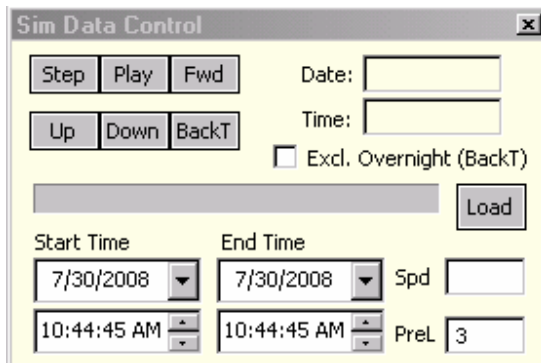
Under **Select Price/Host Feed** be sure that **TradeMaven** is selected.
(**NOT Trademaven Sim**)



The image shows a screenshot of a software dialog box titled "Profile Logon". The dialog has a light green background and a grey border. It contains several sections for configuration:

- Select Profile:** A dropdown menu showing "Today's Replay" and a "New" button to its right.
- Select Price/Host Feed:** A dropdown menu showing "TradeMaven" and a "Delete" button to its right.
- Logon/Logoff/Cancel:** Three buttons arranged horizontally: "Logon", "Logoff", and "Cancel".
- Contract Name:** A dropdown menu and a "Select" button to its right.
- Contract Expiration:** A dropdown menu.
- Exchange:** A text input field.

Once you log on to the profile, a window titled **Sim Data Control** will appear.



Here is the legend for the **Sim Data Control's** buttons:

Step	Stops data when pressed one time. If you keep clicking on the "Step" button you can advance the data one tick at a time.
Play	Starts data
Fwd	Increases speed of replay: you will see how many times you have clicked "Fwd" in the "Spd" box
Up	Forces market up. Good to use when testing Order Strategies
Down	Forces market down. Good to use when testing Order Strategies
BackT	Plays Market Replay at the fastest possible speed. Used when backtesting strategy created in Strategy Builder.

Spd: This will show the current speed of the data into the chart or dome. It will increase by one each time FWD is clicked.

PreL: This will preload data prior to your Start Time. The "PreL" data is in hours. This feature is critical for most indicators that require a certain amount of historical data to work properly.

You can use this data feed just like any other. You can open charts, use indicators, and test strategies in a simulated environment that YOU control.

Today's Replay: ES #F

Trading View Options Charts Help

BUY Market		Position Flat	SELL Market			
BUY Bid		0.00	SELL Ask			
Cncl	Amend	Buy	10.50	Sell	Amend	Cncl
			1254.50			
			1254.25			
			1254.00			
			1253.75			
			1253.50			
			1253.25			
			1253.00			
			1252.75			
			1252.50			
			1252.25			
			1252.00			
			1251.75			
			1251.50			
			1251.25			
			1251.00			
		(465)	1250.50	13		
		664	1250.25	(422)		
			1250.00			
			1249.75			
			1249.50			
			1249.25			
			1249.00			
			1248.75			
			1248.50			
			1248.25			
			1248.00			
			1247.75			
			1247.50			
			1247.25			
			1247.00			

2 + - 0.00 0 P
1 2 5 10 Focus H

SimAccountA

Cancel ALL Reverse Flatten

Profit: Loss: OCO MOC

Sim Data Control

Step Play Fwd Date: 07-14-2008
Up Down BackT Time: 09:42:26
 Excl. Overnight (BackT)

Load

Start Time End Time Spd
7/14/2008 7/15/2008 6
9:30:45 AM 10:44:45 AM Prel 3

0m30s(5) Today's Replay: ES #F

You can see that all the windows share the same profile **Today's Replay**